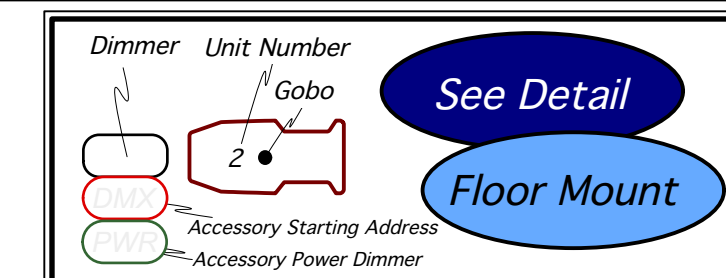


Notes:

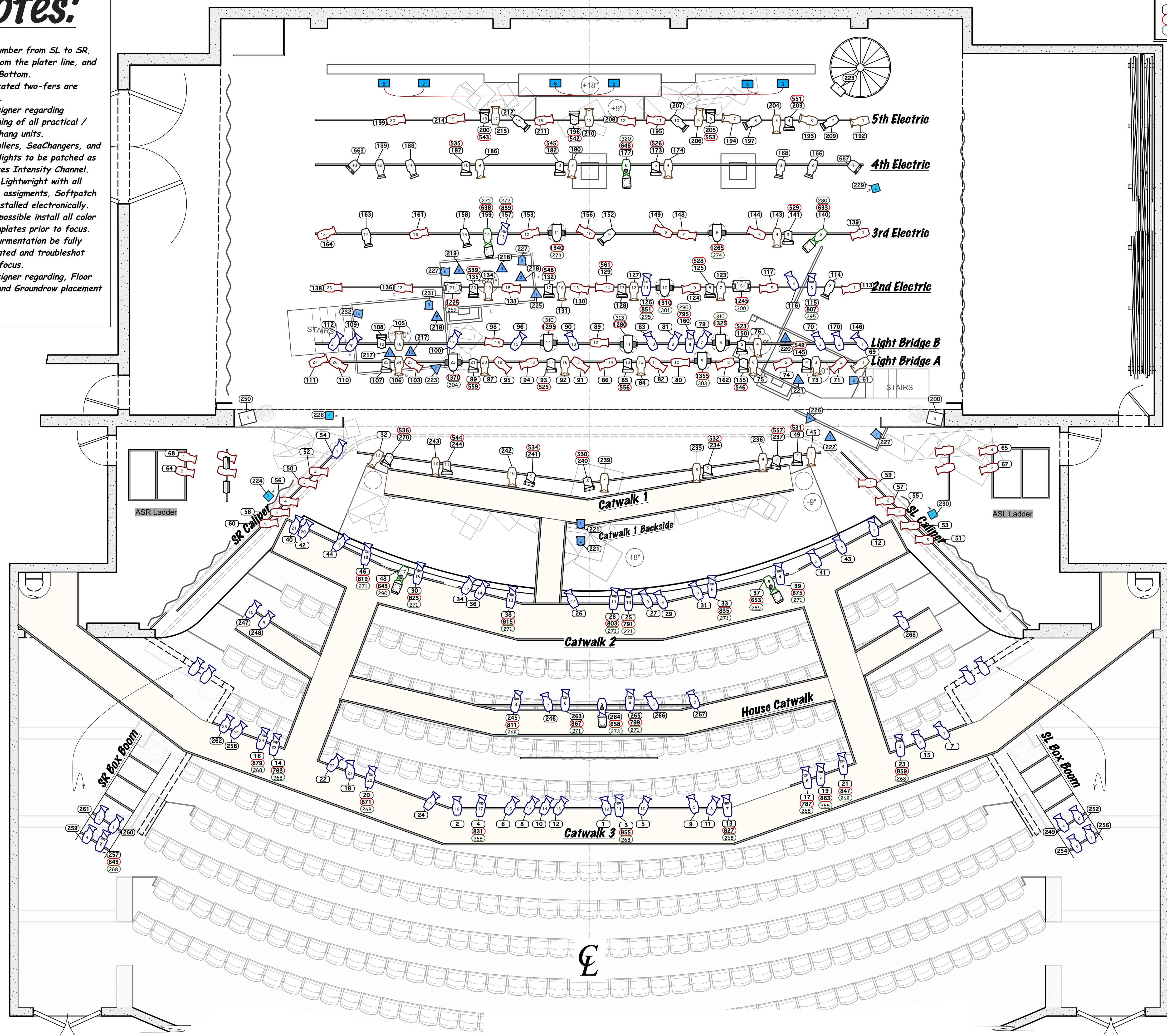
- Units number from SL to SR, away from the plater line, and Top to Bottom.
- All indicated two-fers are optional.
- See designer regarding positioning of all practical / special hang units.
- All Scrollers, SeaChangers, and Moving lights to be patched as attributes Intensity Channel.
- Update Lightwright with all address assignments, Softpatch to be installed electronically.
- Where possible install all color and templates prior to focus.
- All instrumentation be fully documented and troubleshot before focus.
- See designer regarding, Floor Units, and Groundrow placement



Key

- Source 4 19" @ 750 Watts
- Source 4 26" @ 750 Watts
- Source 4 36" @ 750 Watts
- Source 4 50" @ 750 Watts
- Source 4 70" @ 750 Watts
- Meteor EllipScan
- Q3 Spectra Scroller
- SeaChanger
- DMX Iris
- PAR Strobe
- Vivid 11
- VariLite VL500D @ 1200 Watts
- Studio Spot 250
- Nook Light @ 300 Watts
- Radio Shack Strobe
- Radiance Hazer
- Practical (See Notes)
- Altman 8" Fresnel @ 1000 Watts
- Altman 6" Fresnel @ 500 Watts
- Altman Spectra Cyc 100

29	
28	
27	
26	
25	
24	5th Electric
23	
22	
21	
20	4th Electric
19	
18	
17	
16	
15	
14	
13	3rd Electric
12	
11	
10	
9	
8	2nd Electric
7	
6	
5	
4	
3	
2	
1	
"B"	Light Bridge
"A"	Light Bridge



Show: **Antigone**
 Theater: **Taylor Theatre - UNCG**
 Director: **John Gulley**
 Plate: **1** Scale: **1/4" = 1' - 0"** Date: **January 25, 2017**
 Designer: **Dylan & Bollinger** View: **Light Plot**
 Assistant Lighting Designer: **Josh Brand** Draft: **DGB (Vectorworks 2017)**