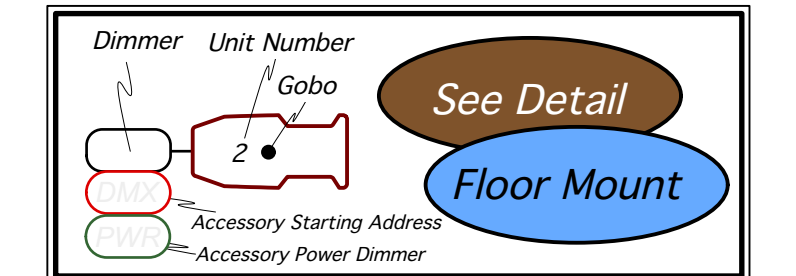
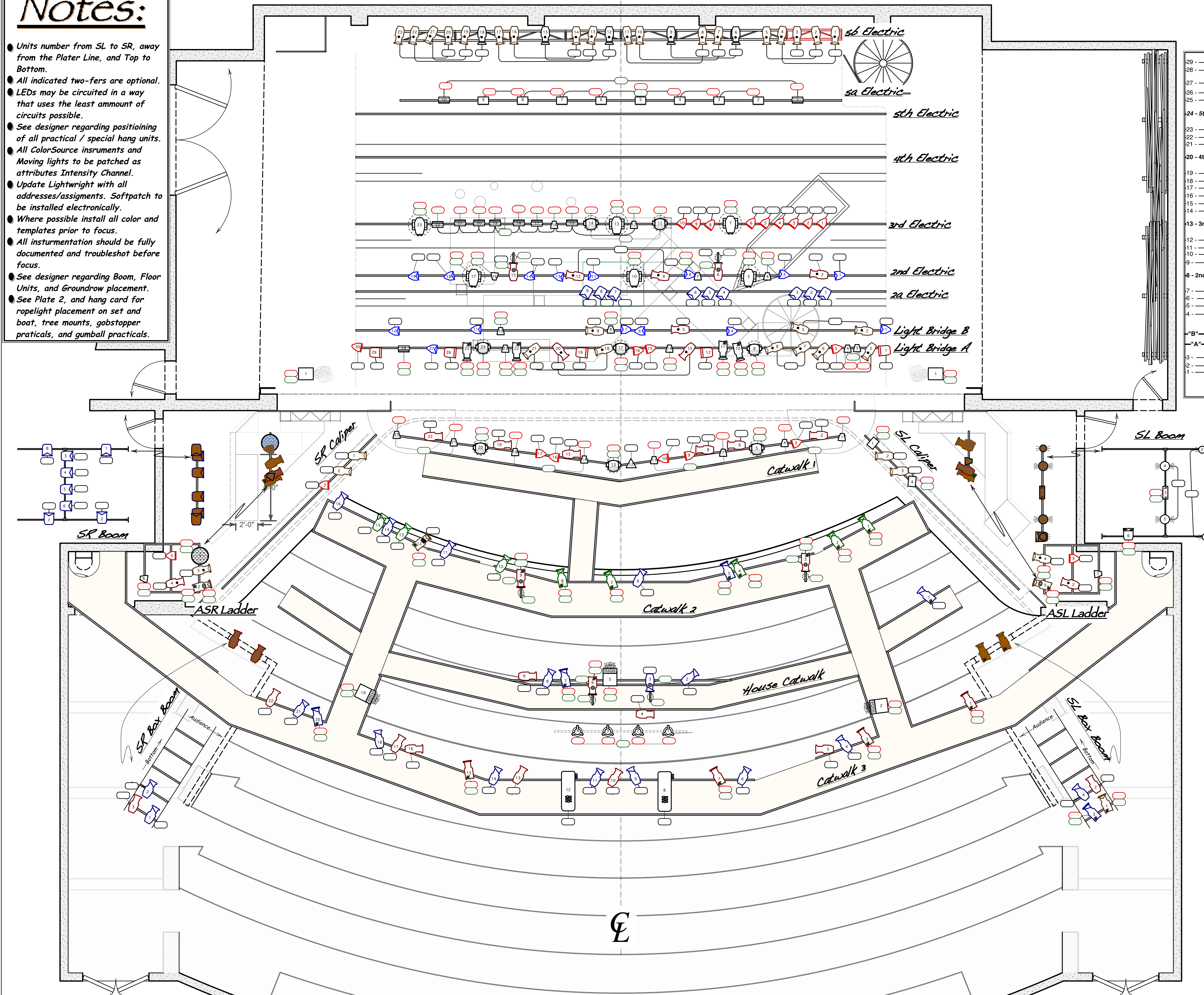


Notes:

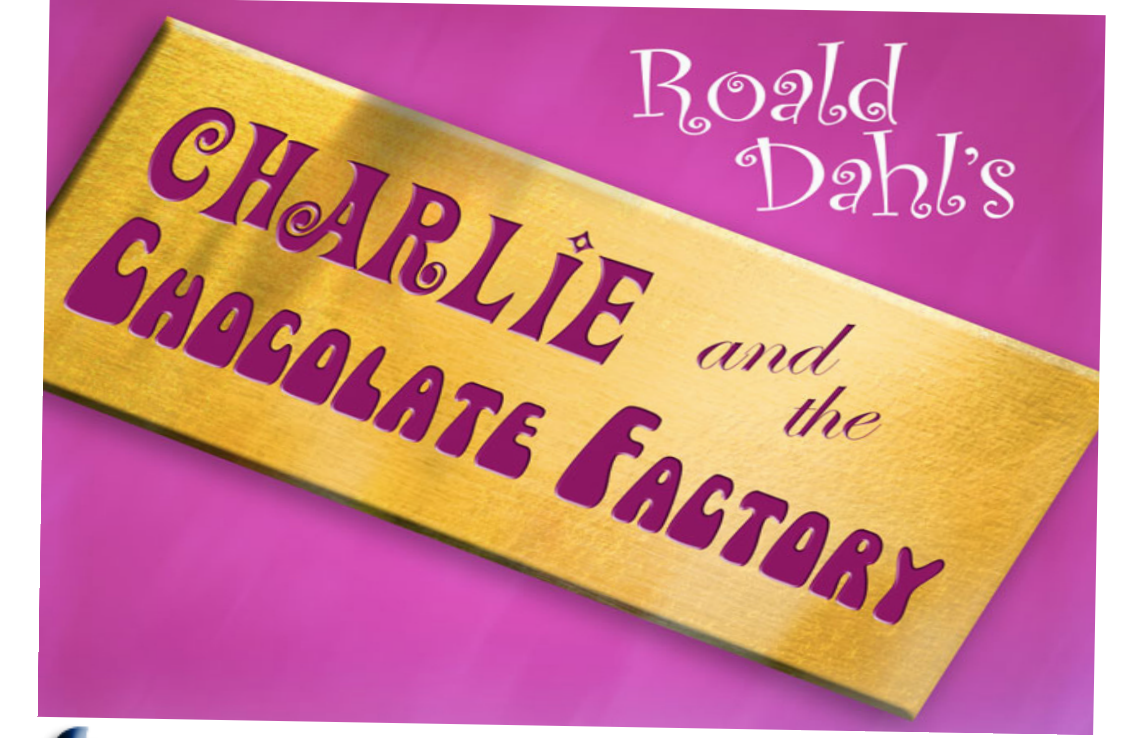
- Units number from SL to SR, away from the Plater Line, and Top to Bottom.
- All indicated two-fers are optional.
- LEDs may be circuited in a way that uses the least amount of circuits possible.
- See designer regarding positioning of all practical / special hang units.
- All ColorSource instruments and Moving lights to be patched as attributes Intensity Channel.
- Update Lightwright with all addresses/assignments. Softpatch to be installed electronically.
- Where possible install all color and templates prior to focus.
- All instrumentation should be fully documented and troubleshot before focus.
- See designer regarding Boom, Floor Units, and Groundrow placement.
- See Plate 2, and hang card for ropelight placement on set and boat, tree mounts, gobstopper practicals, and gumball practicals.



29	
28	
27	
26	5a Electric
25	
24	5th Electric
23	
22	
21	Cyc
20	4th Electric
19	Full Black
18	Legs #3
17	Boarder #3
16	Trees
15	Trees
14	Trees
13	3rd Electric
12	Legs #2
11	Boarder #2
10	
9	
8	2nd Electric
7	2a Electric
6	Legs #1
5	Boarder #1
4	
3	
2	Scrim
1	Screen

Key

	- Pin Spot		- Source 4 19" @ 575 Watts
	- Bubble King		- Source 4 26" @ 575 Watts
	- GAM Film/Fx		- Source 4 36" @ 575 Watts
	- Twin Spot		- Source 4 50" @ 575 Watts
	- DMX Iris		- Source 4 70" @ 575 Watts
	- Diverstronis Strobe		- Source 4 19" EDLT @ 575 Watts
	- G300 Fogger		- Source 4 26" EDLT @ 575 Watts
	- Radiance Hazer		- Source 4 36" EDLT @ 575 Watts
	- Mirror Ball		- Source 4 50" EDLT @ 575 Watts
	- i-Cue		- Source 4 50" EDLT @ 575 Watts, Floor
	- Large Police Beacon		- ColorSource Spot 19"
	- Small Police Beacon		- ColorSource Spot 26"
	- Trident		- ColorSource Spot 36"
	- Scorpion		- ColorSource Spot 70"
	- PAR 16 Medium		- ColorSource Spot 19" EDLT
	- PAR 64 WFL		- ColorSource Spot 26" EDLT
	- PAR 64 MFL		- ColorSource Spot 36" EDLT
	- Altman Spectra Cyc 100		- ColorSource Spot 50" EDLT
	- Robe DLX4 Spot		- Source 4 PAR Wide @ 750 Watts
	- Robe Spider		- Source 4 PAR Medium @ 750 Watts
	- PAR Strobe		- ColorSource Par
	- Vivid 11		- ColorSource Par, Floor
	- Altman Comet Followspot @ 360 Watts		- Vivid 11



Show:	Charlie and the Chocolate Factory	
Theater:	Taylor Theatre-UNCG	
Director:	Todd Siff	
Scale:	1/4" = 1'-0"	Date: October 18, 2017
Designer:	Dylan Bollinger Master Electrician	View: Theatre Master
	Jordan Geron	Draft: DGB (Vectorworks 2017)