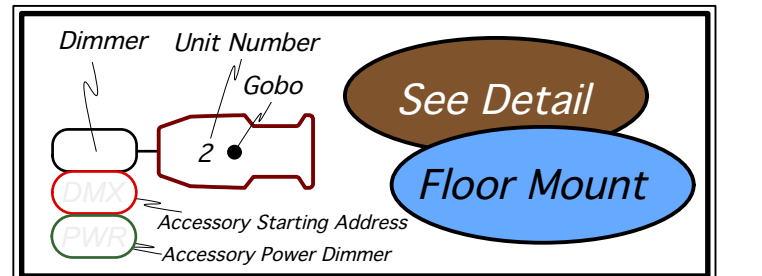
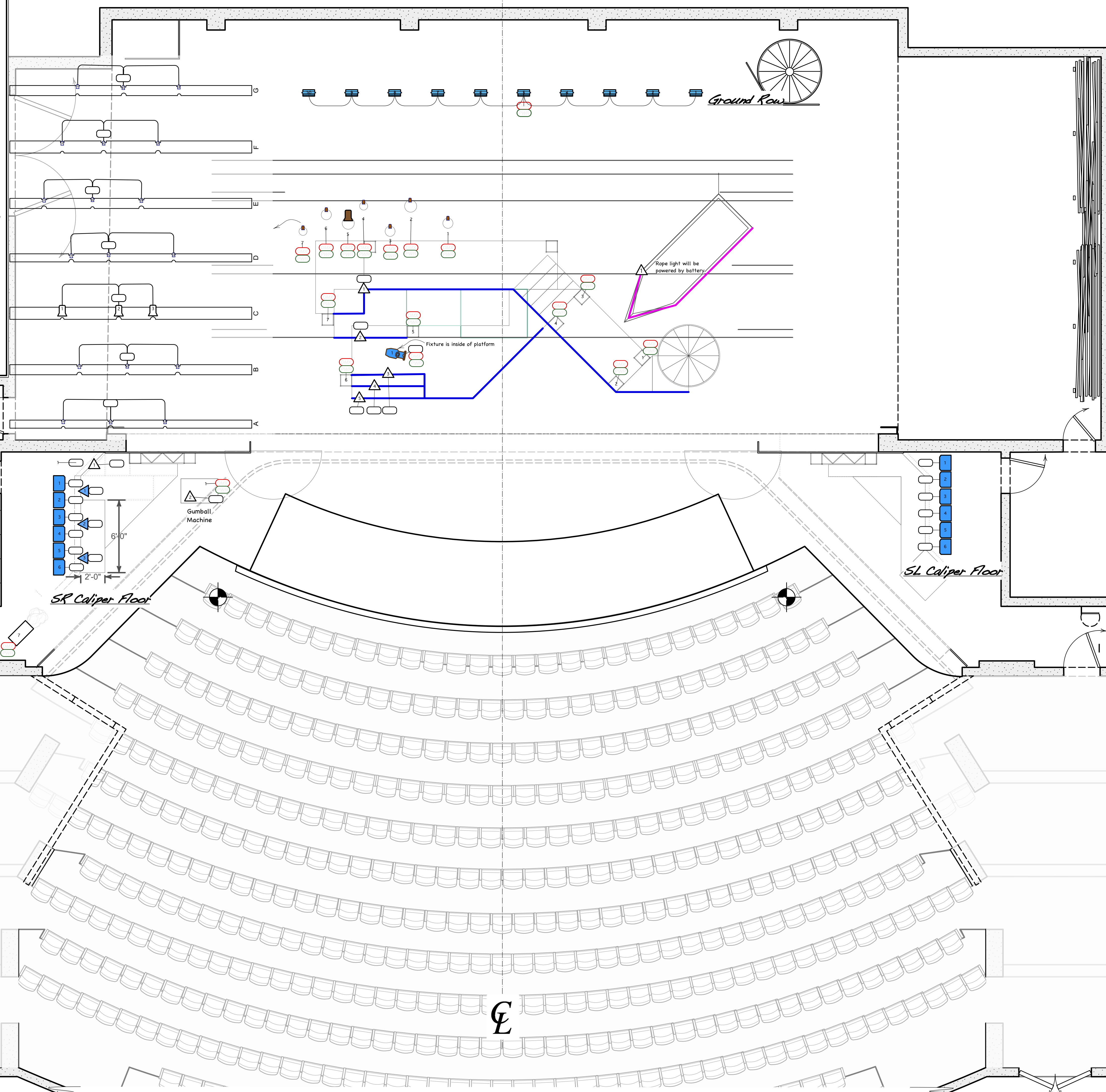


Notes:

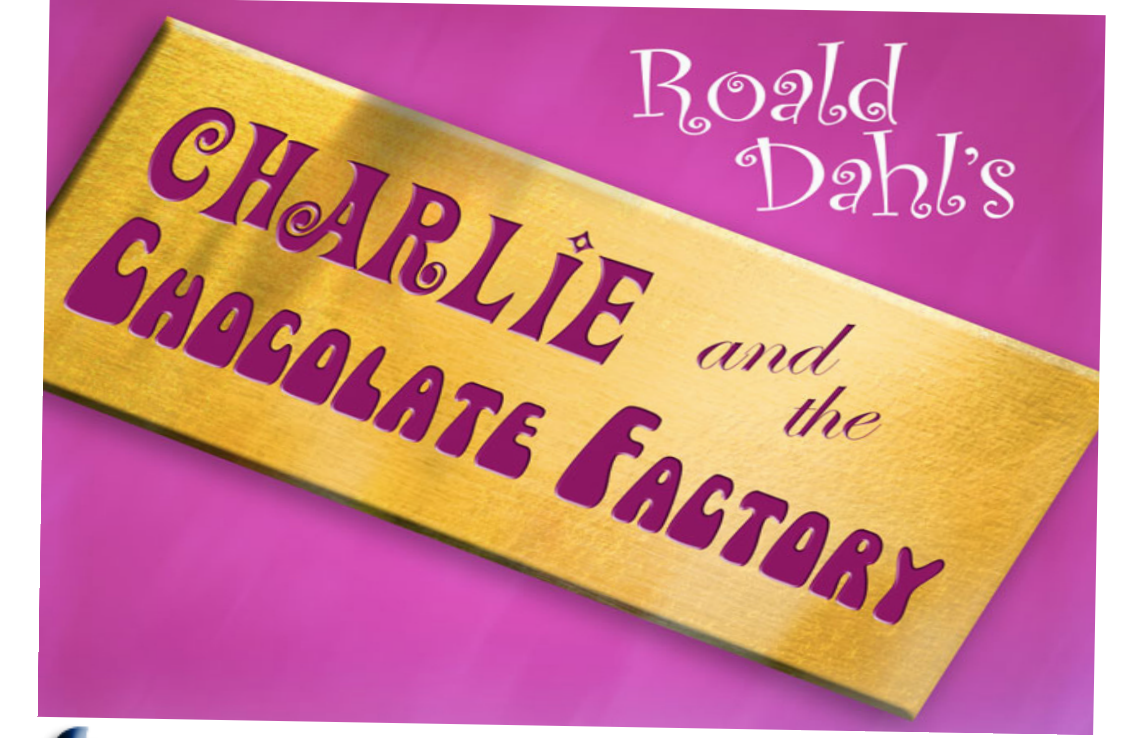
- Units number from SL to SR, away from the Plater Line, and Top to Bottom.
- All indicated two-fers are optional.
- LEDs may be circuited in a way that uses the least amount of circuits possible.
- See designer regarding positioning of all practical / special hang units.
- All ColorSource instruments and Moving lights to be patched as attributes Intensity Channel.
- Update Lightwright with all addresses/assignments. Softpatch to be installed electronically.
- Where possible install all color and templates prior to focus.
- All instrumentation should be fully documented and troubleshot before focus.
- See designer regarding Boom, Floor Units, and Groundrow placement.
- See Plate 2, and hang card for ropelight placement on set and boat, tree mounts, gobstopper practicals, and gumball practicals.



29	
28	
27	
26	
25	5a Electric
24	5th Electric
23	
22	
21	Cyc
20	4th Electric
19	Full Black
18	Legs #3
17	Boarder #3
16	Trees
15	Trees
14	Trees
13	3rd Electric
12	Legs #2
11	Boarder #2
10	
9	
8	2nd Electric
7	2a Electric
6	Legs #1
5	Boarder #1
4	
3	
2	Scrim
1	Screen

Key

	- Pin Spot		- Source 4 19" @ 575 Watts
	- Bubble King		- Source 4 26" @ 575 Watts
	- GAM Film/Fx		- Source 4 36" @ 575 Watts
	- Twin Spot		- Source 4 50" @ 575 Watts
	- DMX Iris		- Source 4 70" @ 575 Watts
	- Diversitronis Strobe		- Source 4 19" EDLT @ 575 Watts
	- G300 Fogger		- Source 4 26" EDLT @ 575 Watts
	- Radiance Hazer		- Source 4 36" EDLT @ 575 Watts
	- i-Cue		- Source 4 50" EDLT @ 575 Watts
	- Mirror Ball		- Source 4 50" EDLT @ 575 Watts, Floor
	- Large Police Beacon		- ColorSource Spot 19"
	- Small Police Beacon		- ColorSource Spot 26"
	- Trident		- ColorSource Spot 36"
	- Scorpion		- ColorSource Spot 70"
	- PAR 16 Medium		- ColorSource Spot 19" EDLT
	- Practical (See Notes)		- ColorSource Spot 26" EDLT
	- Practical Floor (See Notes)		- ColorSource Spot 36" EDLT
			- ColorSource Spot 50" EDLT
			- Source 4 PAR Wide @ 750 Watts
			- Source 4 PAR Medium @ 750 Watts
			- ColorSource Par
			- ColorSource Par, Floor
			- Vivid 11
			- Altman Spectra Cyc 100
			- Altman Spectra Cyc 100, Floor
			- Robe DLX4 Spot
			- Robe Spider
			- PAR Strobe
			- PAR 64 WFL
			- PAR 64 MFL
			- Altman Comet Followspot @ 360 Watts



Show:	Charlie and the Chocolate Factory		
Theater:	Taylor Theatre-UNCG		
Director:	Todd Siff		
Plate:	Scale:	Date:	
	1/4" = 1'-0"	October 18, 2017	
2	Designer:	706-973-9533	View:
	Dylan Bollinger	dgboll@uncg.edu	Floor Mounts
	Master Electrician		Draft:
Jordan Geron		DGB (Vectorworks 2017)	